



HF/50MHz ALL MODE TRANSCEIVER

# IC-7410

The Best Balance of Technology,  
Performance and Fun!





# The Best Balance of Technology, Performance and Fun!

## HF/50MHz ALL MODE TRANSCEIVER IC-7410



### Faster DSP unit and in-house DSP expertise

Icom brings out the best DSP performance combining more than ten years of DSP technical know-how and much faster DSP processors. Icom's in-house DSP experts have developed a IC-746PRO/7400 series replacement that every operator will be proud to own. In addition to the higher speed DSP, the AD/DA converter, AK4620B, provides a higher dynamic range and superior S/N ratio.



<DSP unit> ADSP-21369  
Internal clock speed: 333MHz  
32-bit floating point DSP  
Max. performance: 2000MFLOPS



<AD/DA converter> AK4620B  
ADC Signal/(Noise+Distortion) : 100dB  
ADC Dynamic range, S/N : 113dB  
DAC Signal/(Noise+Distortion) : 97dB  
DAC Dynamic range, S/N : 115dB

### Double-conversion superheterodyne

Introduced with the IC-7800, a double conversion superheterodyne design, with an image rejection mixer for the 2nd mixer stage is employed in the IC-7410. This receiver design not only reduces the electronic complexity, it greatly reduces the number of internal distortion points from older triple and quadruple conversion receivers.

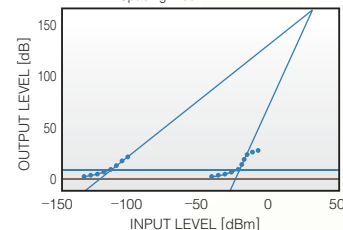
### +30dBm class third-order intercept point

In Icom's continuing efforts to create the best receiver, the design of the IC-7410 incorporates the latest in DSP software technology and Icom's analog RF circuit experience for a +30dBm\* IP3. The end result, clear reception of weak signals surrounded by QRM from broadcast and neighboring ham stations.

\* Typical in 14MHz band.

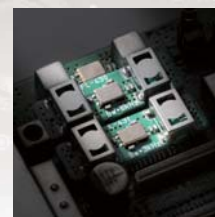
#### Dynamic range characteristics

14.15MHz (USB) Preamp OFF fil=2.4kHz roofing=15kHz Spacing=100kHz



### Three first IF filters (3/6/15kHz)

The IC-7410 accommodates three 1st IF filters with the 15kHz, 1st IF filter supplied, while the 3kHz FL-431 and 6kHz FL-430 are optional for better receiver performance by protecting the desired signal from nearby strong signals. (Fixed for 15kHz in FM mode.)



Optional 1st IF filters (6kHz, 3kHz)

### Large, multi-function LCD

The display increases in width from the IC-746PRO/7400 series. The large multi-function LCD shows frequency, 9-character channel name, channel number, multi-functional meter (includes S-meter, RF output, SWR, ALC and COMP level). The dot-matrix portion of the LCD shows the following items:

- Channel name
- Band scope
- Memory keyer contents
- Function key assignment
- RTTY decoder screen
- Graphical SWR scale

### USB connector for PC control

The IC-7410 has a standard type B USB connector and can be connected to a PC. Modulation input, audio output, RTTY demodulator output and CI-V command can be controlled via the USB cable. Also, the conventional CI-V remote control jack is built in to the IC-7410.



CI-V Jack USB connector

### RTTY demodulator and decoder

The built-in RTTY demodulator and decoder allow you to instantly read an RTTY message on the display. No external units or PC required. The built-in tuning indicator visually helps in critical tuning.

### Simple band scope

The built-in simple band scope shows the band condition at a glance and is handy for searching for active stations.

### Wide range of DSP features

Using the latest algorithms, the digital features give flexibility and speed needed for working in tough RF conditions.

- Digital IF filter allows you to choose filter width and shape factor
- Digital Twin PBT eliminates interference by changing the IF bandwidth and/or shifting the IF frequency
- AGC loop management with programmable AGC time constant
- Auto/manual Notch Filter provides more than 70dB attenuation and eliminates unwanted beat tones
- Noise Reduction can enhance the receiver's signal-to-noise ratio
- Noise Blanker reduces interference from pulse-type noise
- RF Speech Compressor increases average talk power, improving signal strength and readability
- User programmable tone control: microphone equalizer, SSB transmit passband width, receive HPF/LPF and receive audio equalizer

### Ample CW functions

All of the following CW capabilities are included in the IC-7410:

- Large CW pitch knob and independent BK-IN (break-in) delay knob
- CW wave form controlled by the DSP
- 4 keyer channels with 70 characters of transmit memory per channel
- Multi-function electronic keyer with adjustable keying speed from 6-48 wpm, dot-dash ratio from 1:1:2.8 to 1:1:4.5 and paddle polarity
- Bug keyer and full break-in function
- Continuously adjustable CW pitch control from 300-900Hz
- Double key jacks (Front and rear panels) • CW reverse

### High frequency stability

A high stability TCXO crystal oscillator provides  $\pm 0.5$ ppm of high frequency stability over a wide temperature range (0°C to +50°C). This allows for a long steady operating time in digital modes.

### Large heat sink

When compared to the IC-746PRO series, the IC-7410's large heat sink improves heat dissipation. Even during long hours of heavy-duty cycle operation, the IC-7410 provides stable output power.



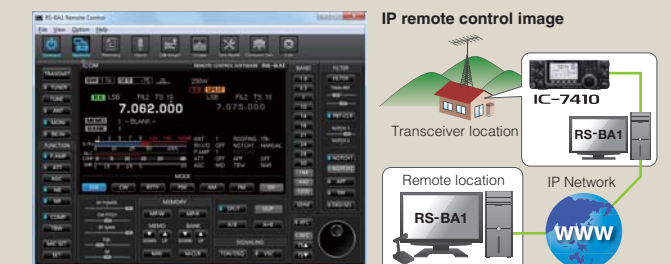
IC-7410 chassis

### Other features

- Built-in voice synthesizer
- User programmable band edge beep
- VSC (Voice Squelch Control) function
- Two preamplifier types: Preamp 1: Improving IMD characteristics, Preamp 2: High gain preamplifier
- 20dB built-in attenuator
- Built-in automatic antenna tuner
- CTCSS tone encoder and decoder
- Triple band stacking register
- Quick split and frequency lock functions
- RIT and  $\Delta$ Tx variable up to  $\pm 9.999$ kHz
- SSB/CW synchronous tuning
- 1Hz pitch tuning and display
- $\pm 0.5$ ppm of high frequency stability
- Program, memory, select memory, mode select and  $\Delta$ f scans
- Automatic tuning steps
- AH-4 control circuit
- Large independent MIC/RF power and Notch knobs

### Optional RS-BA1 IP remote control software

The optional RS-BA1 allows you to use the IC-7410 from another room using your home network or even from a remote location over the Internet.



### Rear Panel View





SPECIFICATIONS

GENERAL

- Frequency coverage :  
USA version  
Rx 0.030-60.000MHz\*  
Tx 1.800-1.999MHz 3.500- 3.999MHz  
5.255-5.405MHz\* 7.000- 7.300MHz  
10.100-10.150MHz 14.000-14.350MHz  
18.068-18.168MHz 21.000-21.450MHz  
24.890-24.990MHz 28.000-29.700MHz  
50.000-54.000MHz
- Europe, Europe-01 version  
Rx 0.030-60.000MHz\*  
Tx 1.810-1.999MHz 3.500- 3.800MHz  
7.000-7.100MHz (Europe)  
7.000-7.200MHz (Europe-01)  
10.100-10.150MHz 14.000-14.350MHz  
18.068-18.168MHz 21.000-21.450MHz  
24.890-24.990MHz 28.000-29.700MHz  
50.000-52.000MHz

- \* Some frequency bands are not guaranteed.
- Mode : USB, LSB, CW, RTTY, AM, FM
- Number of memory Ch. : 101 (99 regular, 2 scan edges)
- Antenna connector : SO-239x2 (50Ω)
- Temperature range : 0°C to +50°C; +32°F to +122°F
- Frequency stability : Less than ±0.5ppm (0°C to 50°C; +32°F to +122°F)
- Power supply requirement : 13.8V DC ±15% (negative ground)
- Current drain (at 13.8V DC):  
Tx Max. power 23A  
Rx Stand-by 2.2A  
Max. audio 3.0A
- Dimensions (WxHxD) : 315x116x343 mm;  
(projections not included) 12.4x4.57x13.5 in
- Weight (approx.) : 10.2kg; 22.4lb

TRANSMITTER

- Output power :  
SSB, CW, RTTY, FM 2-100W  
AM 2-27W
- Modulation system :  
SSB Digital PSN modulation  
AM Digital low power modulation  
FM Digital phase modulation
- Spurious emission : Less than -50dB (HF bands)  
Less than -63dB (50MHz band)
- Carrier suppression : More than 40dB
- Unwanted sideband suppression : More than 55dB
- Microphone connector : 8-pin connector (600Ω)

RECEIVER

- Receive system : Double conversion superheterodyne
  - Intermediate frequencies : 1st 64.455MHz  
2nd 36kHz
  - Sensitivity (typical) :
- |        | 0.5-1.8MHz | 1.8-29.9MHz          | 50-54MHz |
|--------|------------|----------------------|----------|
| SSB/CW | —          | 0.16μV**             | 0.13μV** |
| AM     | 12.6μV**   | 2.0μV**              | 1.6μV**  |
| FM     | —          | 0.5μV** <sup>3</sup> | 0.32μV** |
- 10dB S/N for SSB, CW, RTTY and AM, 12dB SINAD for FM  
\*\*1 Pre-amp 1 ON, \*\*2 Pre-amp 2 ON, \*\*3 29.7MHz.
- Squelch sensitivity (Pre-amp : ON) :  
SSB Less than 5.6μV  
FM Less than 0.3μV
  - Selectivity :  
SSB More than 2.4kHz / -6dB  
(BW : 2.4kHz, sharp) Less than 3.4kHz / -40dB

- CW More than 500Hz / -6dB  
(BW : 500Hz, sharp) Less than 700Hz / -40dB
- RTTY More than 500Hz / -6dB  
(BW : 350Hz, sharp) Less than 800Hz / -40dB  
AM (BW : 6kHz) More than 6.0kHz / -6dB  
Less than 10.0kHz / -40dB  
More than 12.0kHz / -6dB  
Less than 22.0kHz / -40dB
- FM (BW : 15kHz) : More than 70dB
- Spurious and image rejection ratio : More than 2.0W at 10% distortion with an 8Ω load
- AF output power (at 13.8V DC) : ±9.999kHz
- RIT variable range : 3-conductor 6.35 (d) mm (1/8")
- PHONES connector : 2-conductor 3.5 (d) mm (1/8")/8Ω
- EXT SP connector

ANTENNA TUNER

- Matching impedance range:  
HF bands 16.7-150Ω unbalanced\*\*  
50MHz band 20-125Ω unbalanced\*\*  
\*\* Less than VSWR 1:3 ; \*\*2 Less than VSWR 1:2.5
- Minimum operating power :  
HF bands 8W  
50MHz band 15W
- Tuning accuracy : VSWR 1:1.5 or less (SWR after the motor has stopped)
- Insertion loss (after tuning) :  
1.8 MHz band 1.2dB or less  
3.5-50MHz bands 1.0dB or less

Supplied accessories :  
• Hand microphone • DC power cable  
• Spare fuses • CW key plug

All stated specifications are subject to change without notice or obligation.

OPTIONS

Some options may not be available in some countries. Please ask your dealer for details.



**IC-PW1/IC-PW1EURO** HF+50MHz 1kW LINEAR AMPLIFIER  
Covers all HF and 50MHz bands, provides clean, stable 1kW output. Automatic antenna tuner and compact detachable controller are standard. 2 exciter inputs are available.



**AH-4** HF+50MHz AUTOMATIC ANTENNA TUNER  
Covers 3.5-54MHz with a 7m (23 ft) or longer wire antenna.



**AH-2b** ANTENNA ELEMENT  
A 2.5m long antenna element for mobile operation with the AH-4. All amateur bands between 7-54 MHz can be matched.



**AH-740** AUTOMATIC TUNING ANTENNA  
Covers 2.5-30MHz (amateur band). OPC-2321 control cable is required.



**AH-5NV** NVIS KIT  
Fiberglass mobile mounting antenna element for use with AH-740. Covers 2.2-30MHz (amateur band)



**SM-50** DESKTOP MICROPHONE  
Unidirectional, electret microphone for base station operation. [UP/DOWN] switches and low cut function are available.



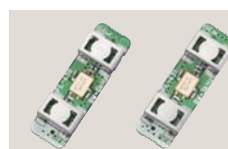
**SM-30** DESKTOP MICROPHONE  
Compact, lightweight electret microphone. Low cut function is available.



**SP-23** EXTERNAL SPEAKER  
4 audio filters; headphone jack. Input impedance: 8Ω. Max. input power: 5W



**PS-126** DC POWER SUPPLY  
13.8V DC, 25A max. with 4-pin type connector.



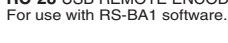
**FL-430** 6kHz 1st IF FILTER  
**FL-431** 3kHz 1st IF FILTER  
1st IF filters for better receiver performance.



**HM-36** HAND MICROPHONE  
Same as supplied.



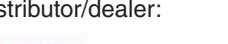
**MB-123** CARRYING HANDLE  
Same as supplied.



**OPC-599** CABLE ADAPTER  
Converts 13-pin ACC connector to 7-pin + 8-pin ACC connectors.



**CT-17** CI-V LEVEL CONVERTER  
For external transceiver control using a PC equipped with an RS-232C port.



**RS-BA1** IP REMOTE CONTROL SOFTWARE  
For IP remote transceiver control from a PC.



**RC-28** USB REMOTE ENCODER  
For use with RS-BA1 software.

Icom, Icom Inc. and Icom logo are registered trademarks of Icom Incorporated (Japan) in Japan, the United States, the United Kingdom, Germany, France, Spain, Russia, Australia, New Zealand and/or other countries.

Icom Inc. 1-1-32, Kami-minami, Hirano-Ku, Osaka 547-0003, Japan Phone: +81 (06) 6793 5302 Fax: +81 (06) 6793 0013 www.icom.co.jp/world Count on us!

**Icom America Inc.**  
12421 Willows Road NE, Kirkland, WA 98034, U.S.A.  
Phone: +1 (425) 454-8155  
Fax: +1 (425) 454-1509  
E-mail: sales@icomamerica.com  
URL: http://www.icomamerica.com

**Icom (Europe) GmbH**  
Communication Equipment Auf der Krautweide 24 65812 Bad Soden am Taunus, Germany  
Phone: +49 (6196) 76685-0  
Fax: +49 (6196) 76685-50  
E-mail: info@icomeurope.com  
URL: http://www.icomeurope.com

**Icom France s.a.s.**  
Zac de la Plaine, 1 Rue Brindejonc des Moulinais, BP 45804, 31505 Toulouse Cedex 5, France  
Phone: +33 (5) 61 36 03 03  
Fax: +33 (5) 61 36 03 00  
E-mail: icom@icom-france.com  
URL: http://www.icom-france.com

**Asia Icom Inc.**  
6F No. 68, Sec. 1 Cheng-Teh Road, Taipei, Taiwan, R.O.C.  
Phone: +886 (02) 2559 1899  
Fax: +886 (02) 2559 1874  
E-mail: sales@asia-icom.com  
URL: http://www.asia-icom.com

**Icom Canada**  
Glenwood Centre #150-6165 Highway 17A, Delta, B.C., V4K 5B8, Canada  
Phone: +1 (604) 952-4266  
Fax: +1 (604) 952-0090  
E-mail: info@icomcanada.com  
URL: http://www.icomcanada.com

**Icom Spain S.L.**  
Ctra. Rubi, No. 88 "Edificio Can Castanyer" Bajos A 08174, Sant Cugat del Valles, Barcelona, Spain  
Phone: +34 (93) 590 26 70  
Fax: +34 (93) 590 04 46  
E-mail: icom@icomspain.com  
URL: http://www.icomspain.com

**Icom (Australia) Pty. Ltd.**  
Unit 1 / 103 Garden Road, Clayton, VIC 3168 Australia  
Phone: +61 (03) 9549 7500  
Fax: +61 (03) 9549 7505  
E-mail: sales@icom.net.au  
URL: http://www.icom.net.au

**Shanghai Icom Ltd.**  
No.101, Building 9, Caifuxingyuan Park, No.188 Maoting Road, Chedun Town, Songjiang District, Shanghai, 201611, China  
Phone: +86 (021) 6153 2768  
Fax: +86 (021) 5765 9987  
E-mail: bjicom@bjicom.com  
URL: http://www.bjicom.com

**Icom Brazil**  
Rua Itororó, 444 Padre Eustáquio Belo Horizonte MG, CEP: 30720-450, Brazil  
Phone: +55 (31) 3582 8847  
Fax: +55 (31) 3582 8987  
E-mail: sales@icombrasil.com

**Icom (UK) Ltd.**  
Blacksale House, Altira Park, Herne Bay, Kent, CT16 6GZ, U.K.  
Phone: +44 (0) 1227 741741  
Fax: +44 (0) 1227 741742  
E-mail: info@icomuk.co.uk  
URL: http://www.icomuk.co.uk

**Icom New Zealand**  
39C Rennie Drive, Airport Oaks, Auckland, New Zealand  
Phone: +64 (09) 274 4062  
Fax: +64 (09) 274 4708  
E-mail: inquiries@icom.co.nz  
URL: http://www.icom.co.nz

Your local distributor/dealer:

**hamTECH**  
Naše kontaktné údaje:

**SOUND DESIGN s.r.o.**  
Pribišova 19/A  
841 05 Bratislava

**Telefón: +421 2 65 45 65 45**  
**Mobil +421 918 246 789**  
**Email: hamtech@hamtech.sk**  
**Web: www.hamtech.sk**